

ANNUAL REPORT

2022



SALISBURY
HOUSE & GARDENS

BOARD OF DIRECTORS

PRESIDENT

Cheryl Critelli

Associate Chief Counsel
John Deere Financial

VICE PRESIDENTS

William Havekost

Retired, Vice President
Care Initiatives, Inc.

Katie Roth

Principle Owner
RC Search Group

TREASURER

Joann Tucker

Director of Finance & Business
Operations
McKee, Voorhees & Sease, PLC

SECRETARY

Beth Mack

AVP - Legal, Individual Markets
Counsel
Global Atlantic Financial Group

MEMBERS

Dr. Ranjani Ananth

Neonatologist
Blank Children's Hospital

Chad Alley

Project Executive
Estes Construction

Bruce Kelley

Retired, President and CEO
EMC Insurance Companies

Janis Ruan

Community Philanthropist

Jeff Stange

President and CEO
Architectural Arts Millwork LLC

HONORARY MEMBERS

Barbara Weeks Phinney

Barron Weeks

Cooper Weeks

Mercedes Weeks Chastain

A LETTER FROM OUR EXECUTIVE DIRECTOR & BOARD PRESIDENT

Among the triumphs and celebrations throughout 2022, we completed an immense restoration of our parking lot retaining wall that had collapsed due to watershed issues. We extend a special thank you to the generous support of many donors for making this extensive infrastructure project possible. Next year, we will tackle the vital restoration of our courtyard which is being funded with support from the W.T. & Edna M. Dahl Trust, Bravo Greater Des Moines, and the John Ruan Foundation Trust. 2023 will also be the launch of our fundraising campaign for our next capital improvement project – replacing the pathway between the parking lot and main entrance and garden. Ongoing garden revitalization, tree and woodlands cleanup and management, along with interior repairs and improvements are also on the agenda for the new year.

As we move into 2023 and beyond, we feel it is important to remain focused on our community. We look forward to continuing to serve as a unique gathering place while fostering additional partnerships with other organizations.

The Weeks family's dedication in replicating an authentic English Tudor manor makes Salisbury House a unique treasure found only in Des Moines, Iowa. Now, Salisbury House Foundation works with that same level of dedication to preserve their legacy along with the history and world-renowned collection found within these walls.

Salisbury House & Gardens is a labor of love. Our small team, dedicated board of directors, and passionate volunteers maintain the 28,000 square foot estate, nine acres of historic woodlands, a collection of roughly 7,500 objects, and a variety of year-round events. We want to thank everyone who has supported us in these efforts, and are excited to continue this work in 2023.

With sincere gratitude,



Keshia Meissner
Executive Director



Cheryl Critelli
Board President

OUR MISSION

To preserve, interpret, and share the international significance of Salisbury House and its collections as a historic house museum for educational and cultural benefit while serving as a unique community gathering place.

VOLUNTEERISM

Volunteers are a vital part of the ongoing operations at Salisbury House & Gardens. They provide tours, work in the garden, and ensure the success of several events throughout the year in a variety of ways that include traffic control, food and beverage service, and even playing our one-of-a-kind Steinway.

In 2022 our volunteers donated 1,675 hours of their time.

- 992** hours providing tours
- 416** hours assisting with events
- 127** hours in board and committee meetings
- 32** hours helping in the garden
- 108** hours working on other projects

The following list recognizes our 2022 volunteers. Every effort has been made to ensure this report is accurate. If your name has been omitted, misspelled, or misplaced, we sincerely apologize. Please contact us with questions or corrections.

^Tour Guide

*Board Member

+Piano Player

Chad Alley*
Dr. Ranjani Ananth*
Grace Bedia
Matt Bockus
Jacquie Brewer^
Darlene Brickman
Ken Brickman
Brittney Brugman+
Jennifer Chittenden+
Debora Christensen
Sam Christianson
Catherine Clough
Bonnie Corron+
Cheryl Critelli*
Dick Daswick^
Mackenzie Dierks^
Dallas Downey
Faith Elder
Beverly Ellis
Elizabeth Erickson^
Elaine Erickson+
Judy Ford^
Laura Formanek
Mary Geisler
Dawn Grandia
Ron Hallenbeck
Paula Hamann^
William Havekost*

Jen Haywood^
Spencer Hink
Muhamed Ibišević
Abby Johnson
Tim Johnson
Jana Jongewaard^
Kristin Jorgenson
Bruce Kelley*
Lisa Kelsey+
Donna Larson
Nita Lovejoy^
Cheryl Lowe+
Beth Mack*
Kris Maggard
Dan McGary^
Candace McGhee+
Kila Meissner
Tony Meissner
Christina Moffatt
Jack Motz
Mark Monroe^
Erin Mudd^
Abhay Nadipuram
Edina Napreljac
Joyce Nehring
Nancy Nelson
Barb Nish+
Lydia Niu+

Susan Pundzak^
Sarah Reeves+
Shawna Ritchie^
Alexis Rose
David Ross^
Katie Roth*
Janis Ruan*
Jeanine Rutter
Emeri Sams
Barb Schmidt
Mark Schmidt
Teresa Schoger
Mike Simonson
Sara Sparling
Jeff Stange*
Jill Stevenson^
Joann Tucker*
Jolene Vanderheiden
Nancy Vaught
Mike Walag+
Ellen Waller
Michael Waller
Gary Wawak
Rebecca Wawak
Nancy Wells
Ann Willer

2022 STAFF

Keshia Meissner
Executive Director

Jayne Durnin
Director of Events

Alex Struelens
Facilities & Project Manager

Taylor Northness
Museum Manager

Beth Laing
Office Administrator

Lauren Johnson
Guest Experience Associate

Lynn Halldorson
Social Media Coordinator

Jon Rutter
Grounds Assistant

MUSEUM ATTENDANCE

Attendees came to tour Salisbury House & Gardens from far and wide in 2022!

Approximately 30% of our museum attendees were locals (those from the DSM Metro Area) and 70% were tourists (from both inside and outside the state).

We had guests from 47 U.S. States and Territories. The top five (excluding Iowa) were: Minnesota, Nebraska, Illinois, Missouri, and California

We had guests from 73 Iowa Counties. The top five (excluding Polk) were: Dallas, Story, Linn, Warren, and Johnson

And finally, we had guests from 18 foreign countries:

Australia	Colombia	England	Greece	Norway	Spain
Canada	Croatia	France	Italy	Philippines	Switzerland
China	Czechia	Germany	Mexico	Poland	Ukraine



296 PUBLIC TOURS

14 EDUCATION TOURS

325 TOURS GIVEN

15 PRIVATE TOURS



7,328
FACEBOOK
FOLLOWERS



3,203
INSTAGRAM
FOLLOWERS



6,374
NEWSLETTER
SUBSCRIBERS



SOCIAL MEDIA & COMMUNICATION

Salisbury House & Gardens communicates through a variety of channels including monthly e-newsletters, direct and bulk mailings, social media, our website, programs and events.

@salisburyhousesdm / www.salisburyhouse.org

160
PINTEREST
FOLLOWERS



MUSEUM MEMBERSHIP

Membership at Salisbury House & Gardens is designed for supporters who want to financially assist our historic museum, while also being active participants in our special events, tours and activities. Membership grants individuals unlimited self-guided tours, early access to events tickets, and at our highest level discounted guided tours and select public event tickets. Below is a list of our 2022 members.

FRIENDSHIP LEVEL

Laura and Hector Agüero
Sarah and Todd Albracht
Hilary Brown
Timothy Burgess and Bryan Noble
Kari Chord
Jonathan and Melanie Clayton
Teresa and Timothy Dunbar
Rachel Formaro
Nancy Freudenberg
Brent Goheen and Rebecca Brommel
Marcy Good
Angel and Ron Grubb
Paula Hamann
Melodie Harris
William Havekost and Eileen Wixted
Cindy Hickle
Jana Jongewaard
Patricia Kehoe
Barnes Kelley
John and Lisa Kenworthy
Jim and Mary Ellen Kimball
Robert and Joy King
Kent and Elizabeth Kochheiser
Mike and Karen Kordick
Kenneth and Lori Liljedahl
Mary and John Melvin

FRIENDSHIP LEVEL CONT.

Heather and Jose Minguier
James and Pamela Moos
Rodney Nordeng
Thomas and Barbara Phillips
Karen and Griffith Reese
Jackie and Bill Romp
David Ross and Walter Tomlinson
Lita Sagula
Carolyn and William Schmarzo
Meg and Chuck Smith
Curt and Kris Steinmetz
Philip and Margaret Stoffregen
Joann Tucker
Melissa and Michael Vaughn
Leigh Wichern
Samantha Zepeda

HOUSEHOLD LEVEL

Rex and Nancy Anderson
Norman and Barbara Mittelstaedt
Berven
Ely and Jacquie Brewer
Sydney Coder
Cathy and Randy Cory
Steve and Martha Davis
Jessi Goodsell and Brian White
Michelle Jackson

HOUSEHOLD LEVEL CONT.

James Linville
Carrie Nimrod
Joseph, Molly, and Carrie Phelps
J. Mark and Barb Schmidt
Michael and Andrea Seusy
Ann Thy
Beth Walling

INDIVIDUAL LEVEL

Dr. Susan Andrews
Lea Bradford
Monica Brich
Michael Callison
Beth Wimber Dietsch
Paula Feltner
Fred Haskins
Juanita Lovejoy
Cheryl Powell
Wendy Prigge
Susan Pundzak
Sara Sparling
Cara Stille
Dr. Jacqueline Thompson

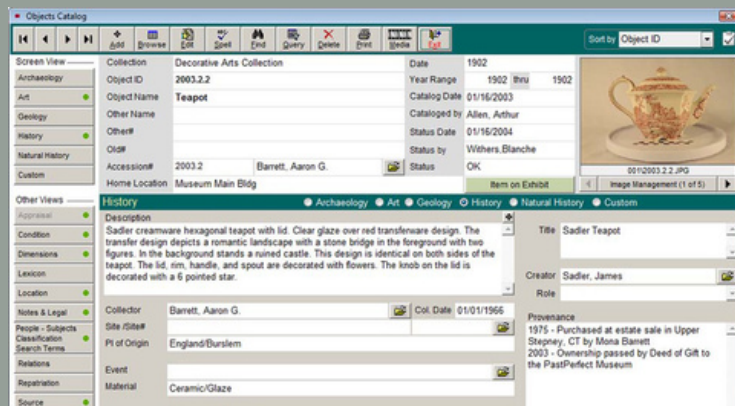
CURATORIAL & COLLECTION UPDATES

PAST PERFECT WEB EDITION

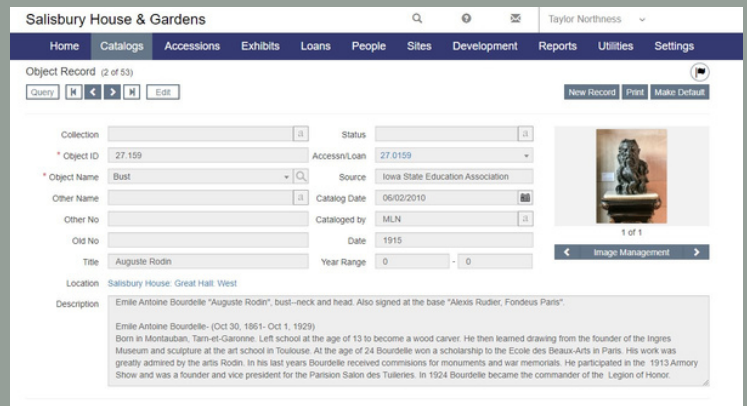
Thanks to a grant we received from the Community Foundation of Greater Des Moines, we were able to update our collections software from PastPerfect 5.0 to PastPerfect Web Edition, making the software more accessible to staff. PP5 was attached to specific computers in the office and PPWeb not only allows login flexibility but includes some unnecessary but much-appreciated cosmetic changes. The software works largely the same but PPWeb uses Authority Files to streamline the data process. Essentially, there are now data fields where the user can create a custom, drop-down menu for the field. This quickens the data entry process and prevents confusion. In PP5 everything was typed so even a small difference or a simple typo between entries could make research difficult.

PPWeb also has the option of Public Access. With a little more behind-the-scenes work, we hope to launch this to the public in the next few years!

PastPerfect 5.0



PastPerfect Web Edition



TEMPORARY DISPLAYS

The Weekes had several knick-knacks and miscellaneous items that filled their home. Many of these items are part of the Salisbury House collection but due to their size, it's difficult to find appropriate and safe spaces to display them. We are fortunate to have a few free-standing display cases so for a large portion of 2022, Charles' Bedroom was used to showcase these smaller items.

The first display of 2022 was the Vienna Porcelain Tea Set. This tea set was made by the Imperial and Royal Porcelain Manufactory of Vienna. The Vienna Porcelain Manufactory was established in 1718, making it Europe's second-oldest porcelain factory. The manufactory was originally founded by Claude de Paquier, however it was purchased by the Empress Maria Theresa in 1744. Once the Austrian imperial family took ownership, the porcelain pieces were stamped with a "bindenschild", or what is commonly referred to as a "beehive mark". The shape was inspired by the imperial family's coat of arms and was typically applied in a blue underglaze.

The second display was of three fans from Edith Weeks' fan collection. These particular fans date from the late 18th to early 19th centuries and are made from a combination of nacre, ivory, lace, and watercolor on paper. Salisbury House has 46 fans in the collection, and plans to put more on display in the future.

PARTNERSHIP WITH GRINNELL COLLEGE

The Salisbury House Library Collection is located at Grinnell College, where it is being researched, digitized, and conserved for the benefit of students, scholars, and the public. We partner with Grinnell College throughout the year to share selections from the Salisbury House Library Collection via a display case in the library whose contents rotates out every few months.

Laura Michelson, an Assistant Professor at Grinnell College and the Project Archivist working with the Salisbury House Library Collection, made an appearance at The Garden Party this past year. She brought with her a selection of books from the Salisbury House Library Collection and set up a “pop-up” for the event. Her selections were on theme and included titles such as Fleur Animees by J.J. Grandville, Colour Schemes for the Flower Garden by Gertrude Jekyll, and The Flowers I Love by Katherine Cameron. Laura plans to make a reappearance at The Garden Party in 2023, and pop-up at a few other Salisbury House events throughout the year.

DIGITAL KIOSK UPDATE

The digital kiosk in the library allows guests to look through scans of items in the Salisbury House Library Collection at Grinnell College Libraries, and in 2022 we added a section of historic photographs from our own collection (see image below). We are fortunate to have a plethora of photographs from the Weeks family and are excited to share them with museum guests.



2022 BOOKS ON DISPLAY

January - February
STORIELLA AS SHE IS SYUNG

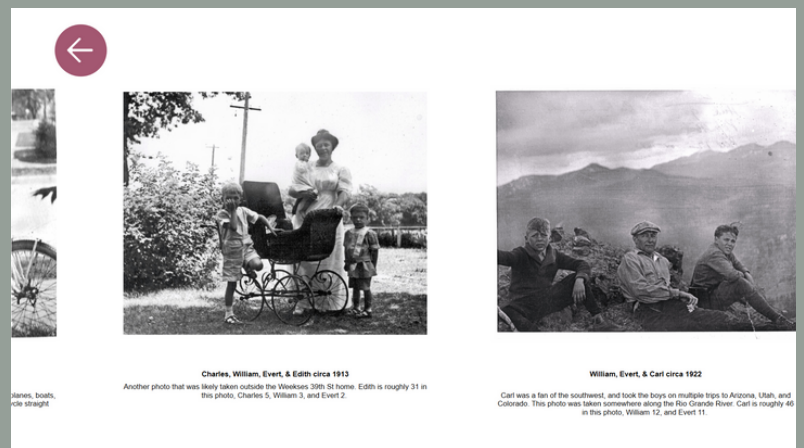
by James Joyce
1939

March - April
ONE WORLD
by Wendell Wilkie
1944

June - August
ENGLISH GARDENS
by H. Avary Tipping
1925

September - December
WELL AT THE WORLD'S END
by William Morris
1896

Salisbury House
Library Collection
at Grinnell College Libraries



A screenshot of the new historic photographs section.



The Garden Party

Guests dress in their favorite spring ensembles for our spring fundraiser, The Garden Party. This elegant and relaxing afternoon is held in the spacious and beautiful gardens with live local entertainment, classic yard games, brunch, a customizable mimosa bar, house tours, and more. This year saw 206 attendees with 99 more attendees than the previous year.

THE GARDEN PARTY SPONSORS

PRESENTING SPONSOR: 

SUPPORTING SPONSORS:

HONEY & JOY
event planning & design

PALM

IRON HORSE
WEALTH MANAGEMENT, LLC.



Ghoulish Gala

Ghoulish Gala is our annual fall fundraising event where attendees are encouraged to come in macabre-inspired costumes and enjoy an evening of eidolic excitement. Partygoers enjoyed heavy hors d'oeuvres, spooky signature libations, entertainment throughout the decorated house, and the night ended with an epic dance party. This year's activities included perfume making, a scavenger hunt, a tarot card reader, screenings of "Murder at Henderson Manor" (a short film made by one the Weeks boys in 1941), and a photo-op on Carl's Balcony. 113 guests attended this event with 35 more attendees than the year before.

GHOULISH GALA SPONSORS

PRESENTING SPONSOR: 

SUPPORTING SPONSORS:



EVENT PARTNERS

Click! Photography

DJ Big Lare

Vowed Vintage

White Willow Events





HOLLY & IVY

Holly & Ivy is our largest signature fundraiser, with 810 guests visiting Salisbury House over the course of two days. The event highlights local designers, decorators, florists, home stagers, and individuals who generously donate their time and talent to decorate rooms throughout the estate.

This year's Holly & Ivy attendees toured two local historic private homes, met with the property owners, and learned a bit of local history. At Salisbury House guests took photos with Santa, savored snacks and drinks at the new pop-up Candy Cane Café, enjoyed music played on Salisbury House's one-of-a-kind Steinway D, and voted for their favorite rooms.

Attendees had a lot to consider when voting on their favorite room. Decorators took inspiration from several places with some leaning into the aesthetics of a particular room, like White Willow who chose a woodsy, airy tablescape to match the bright Common Room; others chose to embrace history, like Staging 2 Sell It who filled Edith's suite with not only antique décor but a vintage wedding dress; and some took inspiration from the Salisbury House art collection, like Willow Flower Farm who had Joseph Stella wrapping paper custom-made to pair with the Stella hanging in the Breakfast Room.

The winners of this year's decorator contest were:



1ST PLACE
Staging 2 Sell It

2ND PLACE
Interiors by Andrea

3RD PLACE
J.W. Floral with
Sandy Oujiri
sponsored by
Merkle Retirement



Salisbury House staff and volunteers decorated the hallways and any rooms not decorated by a professional. This included the Porch Room, which was decked out in a "Mrs. Clause's Night Out" theme with fake champagne, swathes of pink, and several portraits of women pulled from collections storage just for the event. Staff also decorated the Dining Room, and used the opportunity to set the table with an elaborate display of the Weeks family's original china and silver.

HOLLY & IVY SPONSORS

PRESENTING SPONSOR: 

SUPPORTING SPONSORS:



David & Merrilee Lundquist

HOLLY & IVY PRIVATE HOMEOWNERS

BRENT GOHEEN & REBECCA BROMMEL
presented their Brick Manor

RACHEL & JONATHAN PREISSER
presented their Brick Georgian Colonial

HOLLY & IVY DECORATORS

HONEY & JOY EVENTS
Evert's Bedroom

INTERIORS BY ANDREA
The Library

J.W. FLORAL WITH SANDY OUJIRI
William's Bedroom
Sponsored by Merkle Retirement

MRS. JACK INTERIORS
The Great Hall

SPENCER HINK
Charles' Bedroom
Lafayette's Bedroom

STAGING 2 SELL IT
Edith's Suite

WEST ELM
The Queen Anne Bedroom

WHITE WILLOW
The Common Room

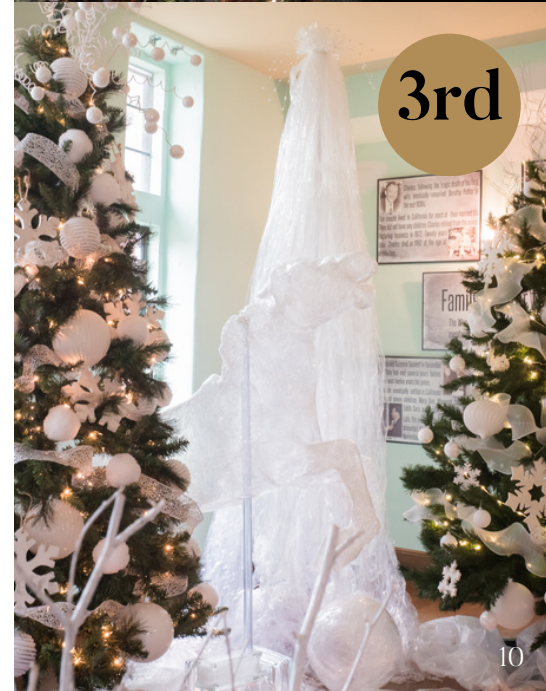
WILLOW FLOWER FARM
The Breakfast Room



1st



2nd



3rd

TOTAL EVENT
ATTENDEES =
4,812

354
ATTENDED A
PUBLIC EVENT

3,378
ATTENDED A
PARTNER
EVENT

1,080
ATTENDED A
SIGNATURE
FUNDRAISER

PUBLIC EVENTS AT SALISBURY HOUSE

There are a plethora of events that took place at Salisbury House & Gardens in 2022 in addition to our three signature fundraising events.

Tea at the Castle events are a beloved Salisbury House tradition. While each tea is similar in format (delicious teas and treats, music played on the Salisbury Steinway piano, history, art, and self-guided tours), they vary in the menu, art/history discussion, and general theme. The March tea was loosely St. Patrick's day themed (Irish Cream macarons anyone?) and featured a discussion about Salisbury House's collection of Weeks family photographs and home videos. The May tea was Mother's Day themed and centered around Edith Weeks' shawl collection. The December holiday tea was a fan favorite, where we discussed holiday traditions and the various collection items staff incorporated in the holiday décor for Holly & Ivy.

Each year Salisbury House & Gardens hosts a festive Holiday Fundraising Concert featuring a local celebrated musician. In early December, guests enjoyed talented crooner Freddy Gazzo and his band in the beautiful Common Room. Drinks and appetizers were served and guests were welcome to tour the House, decorated for the holidays.

Salisbury House staff also held appreciation nights for our volunteers and donors, in the spring and fall respectively. These events featured appetizers and drinks, live music, and the opportunity to enjoy the property in the early evening when it is typically closed to the public.





Winefest

8.28.2022



Live Well Advisors Social

7.19.2022



"Peck: The Movie" Filming

9.20.2022

RENTALS & PRIVATE EVENTS

The grand estate of Salisbury House & Gardens along with its sweeping lawns and beautiful gardens provides the flexibility for small, intimate gatherings or large events. In addition to weddings and receptions, 2022 also saw a variety of other events such as social gatherings, holiday parties, corporate meetings, birthday parties, proposals, Winefest, concerts, celebrations of life, and more!



Tiffany & James

10.22.2022



Mel & Drew

3.3.2022

SOTL SPONSORS

QUEEN

Craig & Betty Miller

DUKE

Nancy Main

KNIGHT

Iles Funeral Homes

SQUIRE

Cherie & Robert Shreck
Ravi & Molly Shukla
Susan & Carl Voss

SUPPORTING FRIENDS

Capital Group Matching Gifts
Trudy Holman Hurd
Robert & Joy King
Amy Jo Reimer-Myers
John Schmidt & Deb Wiley
Jeanie & Bill Smith

SOTL DONORS

Anonymous
Thomas Becker
Unes and Linda Booth
Trinity Braun
Kenneth & Darlene Brickman
Joni Clark
Kristina & Brian Corcoran
Audrey Dell
Sue Dittmer
Beverly Evans
Shannon & Randall Foster
Carol Grimm
Courtney Guntly
R. Michael & Loretta Hayes
Daniel Kennedy
Dr. Jim & Mary Ellen Kimball
Holly Klotz & David Simpson
Susan Lagneaux
Ann Lohmeier
William Morris
Stacy & Lincoln Pearce
Karen Person
Joy & Mike Pietig
Michael & Adrienne Seusy
David Sheridan
Bruce & Joyce Vandegrift
Elaine Van Dyck
Wynn Walters



SHAKESPEARE on the LAWN

KING LEAR CAST

RICHARD MAYNARD
King Lear

JEN GREEN
Goneril

JONATHAN DELIMA
Albany

GIOVANNI BAHENA
Oswald

HEIDI MASON
Regan

JUSTIN VERTRAETE
Cornwall

MAGGIE SCHMITT
Cordelia

DAVID ROBINSON
France

DAVID KORKOW
Bergundy

ALEX WENDEL
Kent

BRITTNY REBHUHN
Fool

SEAN CANUSO
Gloucester

BENJAMIN SHERIDAN
Edgar

THOMAS GILL
Edmund

KING LEAR CREW

BRAD DELL
Director

KATRINA SIECK
Stage Manager

BRIANNA LEONARD
Assistant Stage Manager

BRANDON BROCKSHUS
Fight Direction

DAKOTA SOMMER
Lighting Design & Master Electrician

EMILY GANFIELD
Costume Design

TODD WARMING
Sound Design

KRISTER STANDSKOV
Carpenter

MATTHEW MCIVER
Artistic Director

LAUREN DURSKY
Production Manager

THE START OF A NEW PARTNERSHIP

For more than a decade, Salisbury House Foundation enlisted the theatrical and production talents of Iowa Stage Theatre Company for our annual summer event - Shakespeare on the Lawn. The COVID-19 pandemic put SOTL on hold, which led to a two year hiatus. During this time both organizations were reevaluating their event schedules to fit the rapidly changing times and needs of their audiences. While discussing the future of SOTL, it was decided that once the event returned it would do so as a partnership and joint fundraiser for both non-profits.

July 2022 marked this return and SOTL's first year as a true collaboration between Iowa Stage Theatre Company and Salisbury House Foundation. Over the course of five shows the event drew 1,536 attendees - a final number higher than most pre-COVID years!

With this clear public interest and the stability of a partnership, both SHF and ISTC seek to broaden the scope of this event in the years to come. This will likely see SOTL expanding beyond performances to include educational opportunities and experiences, bringing the SOTL brand of Shakespeare to a broader, more inclusive audience.

SOTL VOLUNTEERS

Amanda Baskin
Janice Baxter
George Donald Belkin
Chuck Betts
Sarah Brammer
Dick Daswick
Troy Ellerbroeck
Beverly Ellis
Elizabeth Erickson
Ted Erickson
Noelle Frank
Fred Gee
Sharon Gee
Paula Hamann
Laura Harmon
Harold Hinkhouse
Jana Jongewaard
Lloyd Kaufman
Matt Kennedy
Wayne Kischer
Mike Laing
Donna Larson

Sarah Lych
Paul Maharry
Jeff Mason
Dan McGary
Lisa McVay
Mark Monroe
Joyce Nehring
Nancy Nelson
Wendy Nelson
Megan Northness
Joey Patino
Jeanine Rutter
Jon Rutter
Emeri Sams
Teresa Schoger
Danika Stadtlander
Jolene Vanderheiden
Edward Vasquez
Nancy Vaught
Susan Warming
Laurie Wedmore
Julie Williams



PARTNER EVENTS

BELIN QUARTET FREE SUMMER CONCERT SERIES WITH CIVIC MUSIC ASSOCIATION

For the second year in a row, Civic Music Association was back on the Salisbury House grounds with the talented Belin Quartet playing their weekly free summer concert series. Guests were welcome to bring their own snacks and drinks to picnic on the lawn as they enjoyed the classical music with a breathtaking backdrop. Upwards of 300 attendees each performance.



WIZARDRY CAMP WITH WAGNER SUMMER THEATER

"Hogwarts" reopened its doors for two weeks of a Harry Potter themed summer camp through Wagner Summer Theater. Each week 40 students going into 3rd through 6th grade spent their mornings engaging in various activities led by Wagner Summer Theater staff and character actors. These activities included being sorted into their houses, potions class, wand making, Quidditch on the east lawn, and a final performance for their families at the end of the week.



DES MOINES AREA PIANO FESTIVAL WITH MOBILE MUSIC LESSONSSM

The third annual Des Moines Area Piano Festival was held at Salisbury House in February. Piano students in grades K-12 from the Des Moines metro area were invited to participate, where they performed before professional adjudicators on a piano provided by Mobile Music in the Historic Garage or on Salisbury House's Steinway in the Common Room. Participants were evaluated, received a rating, comments, and a participation ribbon corresponding to their score.



2022 CAPITAL PROJECT

Due to waterflow and structural issues, a portion of the parking lot retaining wall collapsed in the spring of 2021. The new retaining wall was finished in August of 2022. It was built with a permeable concrete wall behind the limestone. This will allow water to flow through without putting pressure on the retaining wall itself. The project cost a total of \$52,730.

This list recognizes those who donated funds to this project. Every effort has been made to ensure this report is accurate. If your name has been omitted, misspelled, or misplaced, we sincerely apologize. Please contact us with questions or corrections.

\$2,500+

Gartner Family Foundation
Thomas and Linda Koehn Foundation
Rotary International District 6000
Larry and Kathleen Zimpleman

\$1,000 - \$2,499

Anonymous
John and Ann Ghrist Fund
Harriet "Rusty" Hubbell
George & Kathleen Kochheiser Family Fund
Mary Oothout
Anastasia Polydorán
Doug and Deborah West

\$500 - \$999

Catch Des Moines
Cheryl Critelli
Kevin and Jeanne Cunningham
Fred and Arlene DeVries
Frederick Eller
In memory of Rosalie Swanson Eller
Onnalee and Mike Gettler Philanthropic Fund
Joe and Betsy Happe
Rick and Diane Hickman
Patricia Hoffman
Robert and Dale Howe
Michael and Deborah Hubbell Family Charitable Fund
John W. Iles
Dr. Todd and Peggy Janus
Joseph Jester
Richard Jones and Beth Stelle Jones
Kevin Krause

Drs. Dan and Andrea McGuire
William and Pauline Niebur Endow Iowa Fund
Post Scholten Family Fund
Stephen and Anne Quinlan
Mark Schuling and Eliza Ovrom
Philip and Berta Van Ekeren
Barron and Donna Weeks
Cooper Weeks

\$499 & UNDER

Cory and Emily Abbas
Anonymous Donor x 6
Becky and Mike Anthony
Nancy and Rick Ball
David and Kristy Barzen
Christine Bening
Ray and Carrie Bening
Martin and Shelley Brody
Dustin Caldwell and Kyle Hunt
David Caris and Hallie Still-Caris
Thomas Cox
Steve and Mary Beth Craig
Thomas and Rebecca Cunningham
Steve and Martha Davis
Dr. Chris Disbro and Meghan Malloy
Wes and Cecilia Ehrecke
Art and Gloria Filean
Matt and Bridget Fryar
Ganesh Ganpat
Sandra Githens
David Grace and Mary Helen Meder-Grace
Graham Construction Co.

List continues next page →





AFTER



\$499 & UNDER CONTINUED

Senator Charles and Ann Barbara Grassley
 Chuck and Janet Haas
 Denise and Alan Holck
 Ibsen Family Fund
 Howard and Susan Katelman
 Barnes and Amanda Kelley
 Edward and Sue Kenny
 Kyle and Sharon Krause Family Foundation
 Layne Lindeback and Christina Wehde
 Chris and Peggy Littlefield
 Charles and Breaca Lozier
 Bob and LaRue Maddox
 Justin and Li Mandelbaum
 Marty and Laura Martin
 Terry Martin & Marcia Warning Martin Family Fund
 Michael and Rhonda McCoy
 Jim and Jeanne O'Halloran
 Randy and Jennifer Ramundt
 Anne Roth and Evan Koester
 Tim and Lindsey Rypma
 Jo Sloan
 James Spooner and Judy Quick
 Dr. Jeffrey and Kathleen Stahl
 Daniel B. Stevenson
 Dr. Mary Stuart and David Yepsen
 Richard and Mathilde Swanson
 Steven and Cheryl Sypal
 Dr. Lisa Veach
 Tim Waddell and Elisabeth Buck
 Doug and Sarah Wells
 Matt and Tanya Wentzel
 Barbara Williams

SOUTH
 PATHWAY &
 STAIRS
 35K - 55K

THE
 COBBLESTONE
 COURTYARD
 160K - 180K

UPCOMING
 CAPITAL PROJECTS

Interested in supporting capital
 improvements? Contact Keshia at
kmeissner@salisburyhouse.org

2022 DONORS TO SALISBURY HOUSE

This list recognizes general support, non-campaign donations, and sponsorships. Salisbury House Foundation Legacy Leaders commit to a donation of \$5,000 or more yearly to the Salisbury House general fund through either one gift or multiple gifts throughout the year. Every effort has been made to ensure this report is accurate. If your name has been omitted, misspelled, or misplaced, we sincerely apologize. Please contact us with questions or corrections.

^Includes Event Sponsorship

*Includes Capital Projects Support

+Legacy Leader

\$100,000 +

Bruce and Susy Kelley+

\$50,000 - \$99,999

Bravo Greater Des Moines*

City of Altoona

City of Ankeny

City of Bondurant

City of Carlisle

City of Clive

City of Des Moines

City of Grimes

City of Indianola

City of Johnston

City of Norwalk

City of Pleasant Hill

City of Polk City

City of Urbandale

City of Waukee

City of West Des Moines

City of Windsor Heights

Polk County

EMC Insurance Companies^

\$10,000 - \$49,999

Ron and Carole Hallenbeck*+

Frederick (Fritz) James+

Principal Charity Classic - Birdies for Charity

Thurston Family Charitable Fund+

Windsor Charitable Foundation & Jim and Sandra Windsor+

\$5,000 - \$9,999

Dr. Ranjani Ananth+

Architectural Arts Millwork LLC+

FBL Financial Group, Inc.^

Marshall and Julie Linn+

Nicola J. Mendenhall & Wendell C. Speers Charitable Fund

Susan B. Moore Charitable Fund+

Benjamin Phinney and Barbara Weeks Phinney+

In honor of Cooper Weeks' 80th Birthday

Polk County Board of Supervisors^

Bill & Jackie Romp Family Fund+

John Ruan Foundation Trust+

Cooper Weeks+

\$1,000 - \$4,999

The Ahrold Family Charitable Fund

Bankers Trust^

David and Kristy Barzen*

Margo & Don Blumenthal Charitable Fund

Brenton Foundation

Robert and Marlene Buckley

Patty and Jim Cownie Charitable Fund

Des Moines Scottish Rite Consistory^

Dave and Nora Everett

Jonathan Fletcher

Global Atlantic Financial Group Matching Gifts

Hamilton, Juffer & Associates, LLP

Charlotte and William Hinson Charitable Foundation

Homesteaders Life Company

Iron Horse Wealth Management, LLC^

Robert and Patricia Jester

Timothy Johnson

Shirley Kuebrich

Doug and Eva Le Bon Foundation

David and Merrilee Lundquist^

Sharon Marek and Celeste Goodrich

O'Brien-Fitzpatrick Foundation

Katie Roth

Jill and Dan Stevenson

Jane and Robert Sturgeon Charitable Foundation

John Tone

The Weathertop Foundation

Andrea Westmeyer

Jim and Ann Willer

Dennis and Diane Young

\$500 - \$999

Chad Alley
Anonymous
Barbara Beatty
Norman Berven and Barbara Mittelstaedt Berven
Patricia Casady
Steven W. Churchill
Cheryl Critelli
John and Jennifer Hilmes
Alan and Denise Holck
John Deere Financial Matching Gifts Program
Beth Mack
Paul J. Meginnis
Tony and Kila Meissner
Noth Family Charitable Fund
Salisbury Oaks Neighborhood Association
Paul and Claudia Schickler Family Fund
Shaff-Jayne Charitable Fund
Bruce and Barbara Sherman
Abigail Spann
Jon Davidson and Lisa Stange Charitable Fund

\$100 - \$499

Steve and Patty Anderson
Anonymous
Sondra Ashmore
Susan Attari
Donald D. and Ann W. Beeson
Ely and Jacquie Brewer
Barbara and Robert Burnett
Steven and Barbara Cappaert
Hal S. Chase
In memory of Lynda Chase
Gail R. Dieleman and Linda S. Dieleman
Jim and Cathy Dietz-Kilen
Dwight and Diane Dollison
John Dresser
Faith Elder
Frederick Eller
Karen Engman
Kevin and Deborah Flagg
Allison and Jim Fleming
Ann and Robert Gernes
Todd Henderson
Heith and Amy Hockenberry
Laurence and Karen Hutzell
Jana Jongewaard
Lowell and Marilyn Kramme
Elizabeth Ann Law

Brian Lenz and Viki Cameron
Susan Low and C. Carleton Frederici
Linda and Dexter MacBride
Stephen V. and Sharon A. Marlow
Michael and Rhonda McCoy
Terry and Ginger Monson
Michael Myszewski and Martha James
M.L. & G. Neugent Endowment
Lori and Kevin Nicolet
Andy and Barb Nish
Sheila Paulson
Questers Moingona #29
Dianne Riley
David Ross and Walter Tomlinson
J. Mark and Barb Schmidt
Craig and Kimberly Shadur*
Gail Sheridan-Lucht
Paul and Susie Stageberg
Philip and Margaret Stoffregen
Adam Stuchel
Diane Summers
In honor of Rose Scarpino
Richard and Mathilde Swanson
Robert and Sandra Tatge
Urban Charitable Foundation, Tim and Toni Urban
In honor of Mike Simonson
Robert and Molly Veenstra
Leigh Wichern

\$99 & UNDER

Susan D. Andrews
Juli Asbille
Alexis Askelson
Amy Beattie
Don Beck
Roxi Beck
Unes and Linda Booth
Brittany Brugman
Tim Burgess and Bryan Noble
Jason Castor
Mark and Connie Charron
Sydney Coder
Cathy and Randy Cory
Panith Crile
Janice Crow
Steven Cummings
Melissa Daniels
Sarah Decker
Michelle Delury
Paula Feltner

Kerry Finley
Ashley Foudree
Ron Frantz
Natalie Frierott
Jacki Fultz
Emma Gelman
Brent Goheen and Rebecca Brommel
Jessica Goodsell and Brian White
Carol Grant
Joanna Guhl
Janelle Hall
Paula and Rich Hamann
Naomi Hamlett
Rhonda Haun
Daniel Hecker
Rebecca Hillmer
Spencer Hink
William Hughes
Kerry Isbell
Janelle Jacobsen
Kristin Jensen
Angela Jiskoot
Rich Johnson
Shannon Johnson
Jamie Johnson
Dashle Kelley
Mike and Karen Kordick
Karen Kraemer
Heather Lacoste
Michael and Beth Laing
Kenneth Liljedahl
John Loughry
Juanita Lovejoy
Betsy Lovelady-Smith
Darryl MacRunnel
Nina Mansfield
Teresa McCall
Beth McCauley
Miki McGovern
Madison McKone
Mary and John Melvin
Denise Mernka

Cindy Miller
Becca Miller
Heather and Jose Minguer
Christina Moffatt
Naomi Meyers
Deanne Myers
Laura Nadler
Jerry Noble
Linda and Dennis Pallwitz
Kelly Peterson
JP Phillips
Elizabeth Poncy
Wendy and Robert Prigge
Yev Pusin
Gail Reiman
Christina Rhodes
Pat and Ed Roach
Karri Rose
Lita and David Sagula
Barb Onhstad and Rhonda Saxton-Williams
Carolyn and William Schmarzo
Michael and Adrienne Seusy
Brenda Shadoan
Mark Sherinian
Chuck and Meg Smith
Alison Sokol
Sally Sonnenburg
Amy Stanwood
William & Ruth Staplin
Catherine Stevermer
Jacqueline Thompson
Joann Tucker
Catherine Wallace
Michael and Pandora Wan
Rebecca and Gary Wawak
Michelle Weinberger
Wells Fargo Community Support Campaign
Dorothy Knight and John White Knight
Penny Wilcoxson
Roni Wilson
Kristie Wilson
Mary Lou Woods

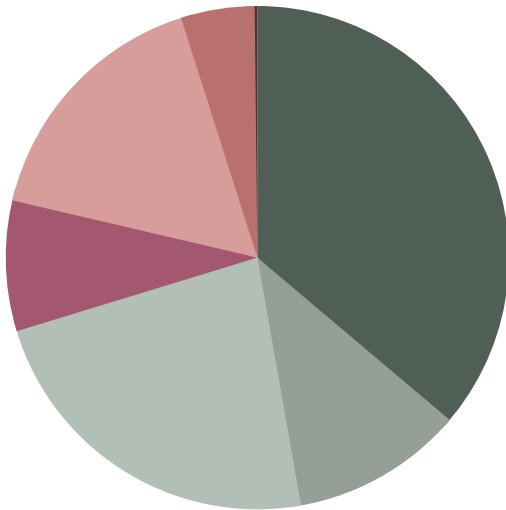
ENDOWMENT

Salisbury House's endowment fund is administered by the Community Foundation of Greater Des Moines and is managed by Iron Horse Wealth Management. To learn more about how your gift can have a lasting impact on our mission, please contact Keshia at kmeissner@salisburyhouse.org.

FINANCIAL STATEMENT

Salisbury House Foundation fiscal year runs January 1 to December 31.

OPERATING BUDGET



INCOME

Annual Funds	277,222.55
Capital Projects	84,850.00
Rentals	176,786.40
Museum (Tours & Gift Shop)	64,208.34
Programming & Fundraising Events	126,074.89
Grants	36,300.00
Credit Card Convenience Fee	1,309.59

TOTAL INCOME

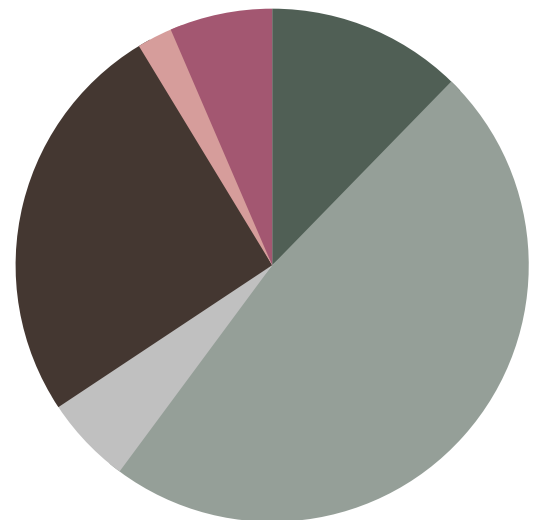
766,751.77

EXPENSES

Operations	84,093.41
Personnel	327,221.01
Insurance Expense	37,848.75
Property Management	175,307.35
Rental & General Event Expense	15,212.82
Special Event Expense	44,252.74

TOTAL EXPENSES

683,936.08



BALANCE SHEET

Assets

Bank Accounts	554,229.52
Accounts Receivable	89,814.30
Investments	859,185.54
Other Current Assets	6,626.14
Fixed Assets	9,127,626.14
Total Assets	10,637,481.64

Liabilities

Accounts Payable	70,370.80
Short Term Debt - Credit Cards	580.75
Payroll / Vacation / Deferred Income	257,116.62
Long Term Liabilities (Gift Annuities)	3,790.00
Total Liabilities	331,858.17

Equity

Retained Earnings & Net Income	10,305,623.47
--------------------------------	---------------

Total Liabilities & Equity

10,637,481.64

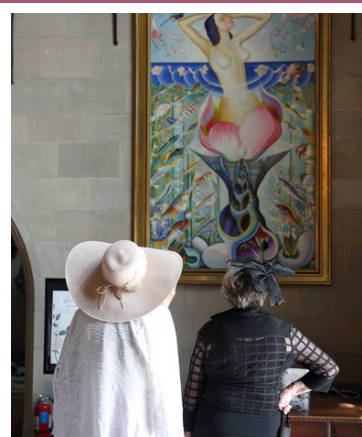
Rent Salisbury House for Your Special Occasion

Salisbury House & Gardens is a breathtaking backdrop to any event, with its pristine European-inspired estate, sweeping lawns, and beautiful gardens. Host a cocktail hour or throw a lavish dinner party. Surprise your best friend with the baby shower of her dreams. Host your child's birthday party in a real-life castle. Conduct your next board meeting in The Common Room, surrounded by history while planning the future.

Weddings at Salisbury House

With exclusive access to the house and grounds during your rental time, our estate offers a unique, fully customizable setting for your biggest day. Whether you're seeking a small, intimate ceremony or an expansive garden for your reception, each wedding at Salisbury House can be customized to create your picture-perfect wedding day.

For more information or to schedule a tour,
contact us at 515.274.1777 or email rentals@salisburyhouse.org.



Tour the Museum

Salisbury House is home to architectural elements from the time of Shakespeare, artwork by classical greats such as Sir Thomas Lawrence and Anthony van Dyck, and a vast array of antique furniture. Pair that with the 1920s mansion's modern conveniences, eclectic mix of early 20th century artwork, and direct ties to one of the first global cosmetic enterprises, and Salisbury House offers the unique opportunity to explore nearly 500 years of American and European history.

Private and Education Tours

Private tours can be scheduled both inside and outside of regular museum hours. Interested in bringing a scout troop, group of homeschool families, or even your college's Introduction to Architecture class? We'd be happy to book a tour for your group at our discounted rate for education-focused groups!

Go to salisburyhouse.org for current museum hours and tour times. For more information or to book a private/education tour, contact us at 515.274.1777 or email contactus@salisburyhouse.org.



SALISBURY HOUSE FOUNDATION
PRESERVING HISTORY, LEGACY, AND CULTURE



4025 Tonawanda Drive, Des Moines, IA 50312
salisburyhouse.org | (515) 274 - 1777